

TSW-750

7" Touch Screen

- > Ultra clean, modern appearance
- > Thin profile and small footprint
- > Affordable and easy to install
- > 7" widescreen active-matrix color display
- > 800 x 480 WVGA display resolution
- > Capacitive touch screen technology
- > Smart Graphics™ support^[1]
- > High-performance H.264 streaming video
- > Rava™ SIP intercom and phone technology
- > Customizable audio feedback
- > Built-in microphone and speakers
- > 5 soft-touch capacitive buttons
- > Single-wire Ethernet connectivity
- > PoE network powered
- > Standard electrical wall box mounting^[4]
- > Additional wall mounting options available^[2]
- > Available tabletop and swivel mount options^[2]
- > Available in smooth black or white finish

Advanced Touch Screen Control

A Crestron® touch screen offers an ideal user-interface for controlling all the technology in your home, boardroom, classroom, courtroom, or command center. Touch screens do away with piles of remote controls, cluttered wall switches, and cryptic computer screens, simplifying and enhancing the way you use technology. For controlling audio, video, lighting, shades, HVAC, security, and other systems, Crestron touch screens are fully-customizable with easy-to-use controls and icons, true feedback and real-time status display, live streaming video, and advanced navigation of digital media servers, tuners, and other devices.

With its clean, contemporary design highlighted by edge-to-edge glass and stunning color graphics, the Crestron TSW-750 touch screen makes an elegant statement on any wall, tabletop or lectern. Perfectly at home in the most contemporary residence or modern office building, its high-tech good looks underline its power for simplifying everyday tasks and functions throughout any facility.

The TSW-750 delivers the ultimate touch screen experience in an unobtrusive, space-saving design featuring a brilliant 7 inch capacitive touch screen display and 5 soft-touch buttons. PoE connectivity and a range of mounting options make installation a breeze for both new and retrofit applications. Additional features include high-performance H.264 video, audio feedback, **Rava™ SIP Intercom**, and advanced Smart Graphics™.

Smart Graphics™^[1]

Crestron touch screens use Smart Graphics to deliver the ultimate user experience and the ultimate value by enabling the creation of dynamically rich user interfaces with incredible efficiency and unparalleled functionality. Using Smart Graphics, programmers can swiftly integrate



fluid gesture-driven controls, animated feedback, metadata, embedded apps, and full-motion video for a deeply engaging and ultra-intuitive touch screen experience.

Crestron Smart Graphics include the following enhancements:

- Cool-looking graphical buttons, sliders, knobs, and gauges are intuitive and fun to use.
- Kinetic effects enhance the feeling of realism with lists and toolbars that scroll with momentum at the flick of a fingertip.
- Drag-and-drop objects snap into place offering an easy way to switch sources.
- Dashboard widgets personalize the touch screen with clocks, weather, news, and other information.
- Customizable themes allow a completely different look and feel for every user, event, or season.
- Fully-developed SmartObjects™ enable sophisticated control over complex devices with minimal programming.

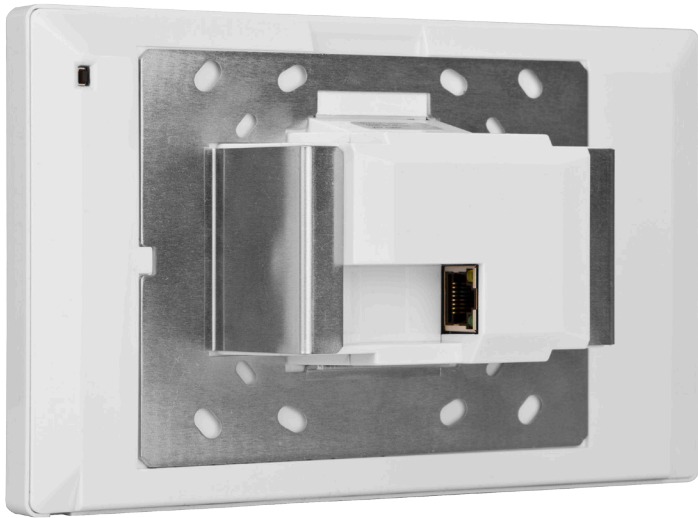
Soft-Touch Buttons

The TSW-750 includes five soft-touch capacitive buttons for quick access to commonly used functions. The buttons are pre-labeled with icons for “Power”, “Home”, “Lights”, “Up”, and “Down” functions. Each button is programmable via the control system for custom functionality.

Streaming Video

High-performance streaming video capability makes it possible to view security cameras and other video sources right on the touch screen. Native support for H.264 and MJPEG formats allows the TSW-750 to display live streaming video from an IP camera, a streaming server (Crestron **CEN-NVS200** or similar^[2]), a **DigitalMedia™** switcher, or a **Capture HD®** system. Video is delivered to the touch screen over Ethernet, eliminating the need for any extra video wiring.

TSW-750 7" Touch Screen



TSW-750-W-S – Rear and Front Views

Rava™ SIP Intercom

[Rava SIP Intercom Technology](#) enables hands-free VoIP communication between any two Rava-enabled Crestron touch screens. Rava works over Ethernet, supporting 2-way intercom, video intercom^[3], and paging without any special wiring. VoIP phone capability is also possible through integration with an SIP-compatible IP phone system or SIP server, allowing hands-free telephone functionality complete with speed-dialing, caller ID, custom ringers, and other enhancements. Built-in echo cancellation affords true-duplex performance for clear, seamless voice communication using the TSW-750's integrated microphone and speakers.

Audio Feedback

Customized audio files can be loaded to add another dimension to the touch screen graphics using personalized sounds, button feedback, and voice prompts.



TSW-750-B-S with TSW-750-TTK TableTop Mounting Kit

Single-Wire Connectivity

A simple Ethernet LAN connection is all that is required to wire the TSW-750, containing all control, video, intercom, and power signals within a single wire.

Power over Ethernet

Using PoE technology, the TSW-750 gets its operating power right through the LAN wiring. PoE (Power over Ethernet) eliminates the need for a local power supply or any dedicated power wiring. A PoE Injector ([PWE-4803RU](#)^[2]) simply connects in line with the LAN cable at a convenient location. Crestron PoE switches ([CEN-SW-POE-5](#), [CEN-SW-POE-16](#), or [CEN-SW-POE-24](#)^[2]) may also be used to provide a total networking solution with built-in PoE.

Simple, Versatile Mounting

Using the bracket provided, the TSW-750 installs easily over a 2-gang or 3-gang electrical box, or a 2-gang European electrical box. It can also be attached directly to drywall and other surfaces over the front of a 2-3/8" H x 3-3/8" W (60mm H x 86mm W) cutout. When installed, it protrudes just 1/2 inch from the mounting surface and is magnetically adhered to its mounting bracket, eliminating any visible screws for an ultra clean appearance.^[4]

Crestron also offers the [TSW-UMB](#) Universal Mounting Bracket^[2], which provides a post-construction wall mounting solution that can accommodate a variety of current and future Crestron devices including the TSW-750. The TSW-UMB makes it easy to change devices at any time without having to cut or patch the wall, or order any additional mounting hardware. For a pre-construction mounting solution, the TSW-UMB can be used along with a [TSW-UMB-PMK](#) Pre-Construction Mounting Kit^[2]. Masonry and concrete applications can be accommodated using the TSW-UMB along with a [TSW-550-BBI](#) back box^[2].

Replacing an older Crestron touch screen with a new TSW-750 can be made simple using a [TSW-RMB](#) Retrofit Mounting Bracket. A variety of adapter brackets are available to enable easy installation of the TSW-750 right over the existing back box, mounting kit, or cut-out.

TSW-750 7" Touch Screen

TableTop Option

Using the optional TableTop Kit ([TSW-750-TTK^{\(2\)}](#)), the TSW-750 becomes a stylish, freestanding touch screen that fits perfectly on a table, desk, or countertop. It can even be permanently attached to the surface using the optional Swivel Mount Kit ([TSW-550/750/1050-SMK^{\(2\)}](#)).

SPECIFICATIONS

Touch Screen Display

Display Type: TFT Active matrix color LCD
Size: 7 inch (178 mm) diagonal
Aspect Ratio: 15:9 WVGA
Resolution: 800 x 480 pixels
Brightness: 300 nits (cd/m²)
Contrast: 350:1
Color Depth: 18-bit, 262k colors
Illumination: Edgelit LED
Viewing Angle: ±70° horizontal, ±65° vertical
Touch Screen: Projected Capacitive

Buttons

Hard Keys: (5) Projected capacitive pushbuttons, programmable, pre-labeled with icons for "Power", "Home", "Lights", "Up", and "Down"
Reset: (1) Miniature pushbutton on rear panel for hardware reset

Memory

LPDDR2 RAM: 1 GB
Flash: 4 GB
Maximum Project Size: 512 MB

Graphics Engine

Supports Smart Graphics™ ^[1]

Communications

Ethernet: 10/100 Mbps, auto-switching, auto-negotiating, auto-discovery, full/half duplex, DHCP, IEEE 802.3af and 802.3at Type 1 compliant

Video

Streaming Formats: H.264 (MPEG-4 part 10 AVC), MJPEG

Audio

Features: Built-in microphone and speakers, Rava™ SIP Intercom
Audio Feedback Formats: MP3

Connectors

LAN PoE: (1) 8-wire RJ45 with 2 LED indicators;
10Base-T/100Base-TX Ethernet port, Power over Ethernet compliant;
Green and yellow LEDs indicate Ethernet port status

Power Requirements

Power over Ethernet: IEEE 802.3af (802.3at Type 1) Class 3 PoE Powered Device

Environmental

Temperature: 32° to 112°F (0° to 45°C)
Humidity: 10% to 90% RH (non-condensing)
Heat Dissipation: 44 BTU/hr

Enclosure

Construction: Plastic, smooth black or white finish
Mounting: Surface mount over a 2 or 3-gang electrical box, 2-Gang European (DIN 49073) electrical box, or 2-3/8" H x 3-3/8" W (60mm H x 86mm W) cutout^[4]; additional wall mount and tabletop options available separately

Dimensions

Height: 4.74 in (121 mm)
Width: 7.59 in (193 mm)
Depth: 2.03 in (52 mm)

Weight

14.1 oz (400 g)

MODELS & ACCESSORIES

Available Models

TSW-750-B-S: 7" Touch Screen, Black Smooth
TSW-750-W-S: 7" Touch Screen, White Smooth

Available Accessories

TSW-750-TTK: TableTop Kit for TSW-750 [specify color]
TSW-550/750/1050-SMK: Swivel Mount Kit for TSW-750-TTK
TSW-UMB: Universal Mounting Bracket
TSW-UMB-PMK: Pre-Construction Mounting Kit for TSW-UMB
TSW-550-BBI: Wall Mount Back Box for TSW-UMB – International Version
TSW-RMB: Retrofit Mounting Brackets
PWE-4803RU: PoE Injector
CEN-SW-POE-5: 5-Port PoE Switch
CEN-SWPOE-16: 16-Port Managed PoE Switch
CEN-NVS200: Network Video Streamer
SW-VMK-WIN: TouchPoint® Virtual Mouse & Keyboard Software for Windows®

Notes:

1. Supports Smart Graphics only. Not compatible with "traditional" UI projects.
2. Item(s) sold separately.
3. H.264 compatible IP camera required.
4. For proper positioning of the touch screen unit, the electrical box or cut-out must be positioned approximately 1/4" to the right of center, and 1/10" above center.

TSW-750 7" Touch Screen

This product may be purchased from an authorized Crestron dealer. To find a dealer, please contact the Crestron sales representative for your area. A list of sales representatives is available online at www.crestron.com/salesreps or by calling 800-237-2041.

The specific patents that cover Crestron products are listed online at: patents.crestron.com.

Crestron, the Crestron logo, Capture HD, DigitalMedia, Rava, Smart Graphics, SmartObjects, and TouchPoint are either trademarks or registered trademarks of Crestron Electronics, Inc. in the United States and/or other countries. Windows is either a trademark or registered trademark of Microsoft Corporation in the United States and/or other countries. Other trademarks, registered trademarks, and trade names may be used in this document to refer to either the entities claiming the marks and names or their products. Crestron disclaims any proprietary interest in the marks and names of others. Crestron is not responsible for errors in typography or photography. Specifications are subject to change without notice. ©2013 Crestron Electronics, Inc.

